

Jamie K. Ellsworth

Intellectual Property Litigation
Complex Business Litigation
Patents, Trademarks & Copyrights

Intellectual Property



www.parsonsbehle.com

Jamie Ellsworth is a registered patent attorney. Her practice emphasizes patents, intellectual property matters and litigation. Ms. Ellsworth's prior work experience includes seven years in various positions with a major telecommunications company, including the management of wireless, voice over internet protocol, internet and conferencing needs for numerous Fortune 1000 companies.

Affiliations:

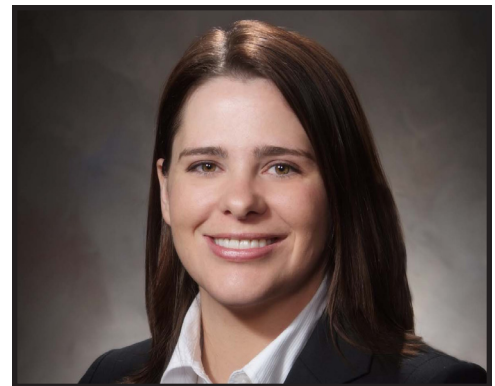
- Member, J. Reuben Clark Law Society

Education:

University of San Diego, (Juris Doctor, 2008)
Idaho State University, (B.S., Microbiology, 2001)

Admissions:

Idaho State Bar
Washington State Bar



JEllsworth@parsonsbehle.com

Parsons Behle & Latimer
960 Broadway Ave., Ste., 250
Boise, Idaho 83706
1.208.562.4900